



County of Lassen
Department of Planning and Building Services

• Planning • Building Permits • Code Enforcement • Surveyor • Surface Mining

April 24, 2020

Maurice L. Anderson, Director
707 Nevada Street, Suite 5
Susanville, CA 96130-3912
Phone: 530 251-8269
Fax: 530 251-8373
email: landuse@co.lassen.ca.us
website: www.co.lassen.ca.us

Zoning & Building
Inspection Requests
Phone: 530 257-5263

NOTICE OF PUBLIC HEARING
LASSEN COUNTY PLANNING COMMISSION

The Lassen County Planning Commission solicits the aid of public agencies and the general public in consideration of the following item:

Applicants: Michael and Christine DeForest, and Randy Leiding

File No.: PM#2005-046

Project: Modification of Parcel Map No. 2005-046 (49 Maps 79-80) to "remove" the note addressing water quality and requiring future water sampling/testing, as the same is shown on said parcel map.

Location: The subject parcels are shown on said Parcel Map No. 2005-046 and are located approximately four miles northwesterly of Litchfield, California.

Zoning: M-R Mountain Resort

A.P.N.: 109-060-22, 109-060-23

Staff Contact: Don Willis, P.L.S., Lassen County Surveyor

The Planning Commission will hold a public hearing on this item at 1:30 p.m. on Tuesday, May 5, 2020, in the Veterans Hall, 1205 Main Street, Susanville, California. All interested persons and agencies are invited to attend the meeting and be heard, or to submit comments to the Commission prior to the hearing, c/o the Department of Planning and Building Services, 707 Nevada Street, Suite 5, Susanville, California 96130.

Maurice L. Anderson,
Director

MLA:dw DW

This information can also be found at the following locations:

In Print: Modoc County Record

Posted at the following locations: 707 Nevada Street in Susanville, CA; 221 S. Roop Street in Susanville, CA; 220 S. Lassen Street in Susanville, CA.

Posted Online: Lassen County Times Online and at the Lassen County Planning and Building Services website.

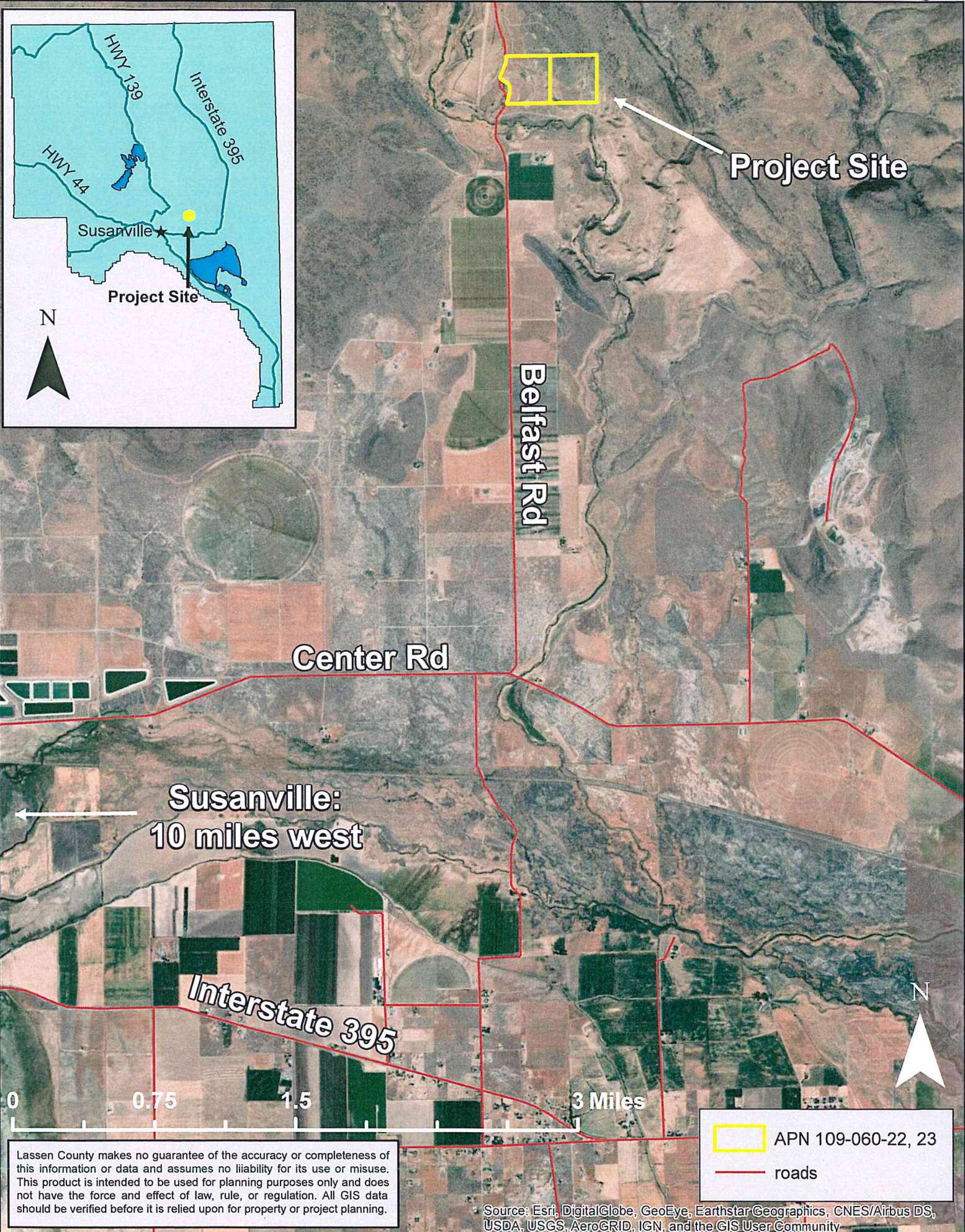
Distribution: Supervisor Hammond (5); Michael and Christine DeForest and Randy Leiding, Applicants; Co. Assessor's Office; Co. Building Official; Co. Environmental Health Dept.; Lahontan RWQCB; Bureau of Land Mgmt.-Susanville; property owners within 300 feet.

NOTE: Anyone wishing to challenge in court an action on the project described above may be limited to raising only those issues raised at the public hearing described in this notice or in written correspondence delivered at, or prior to, said public hearing.

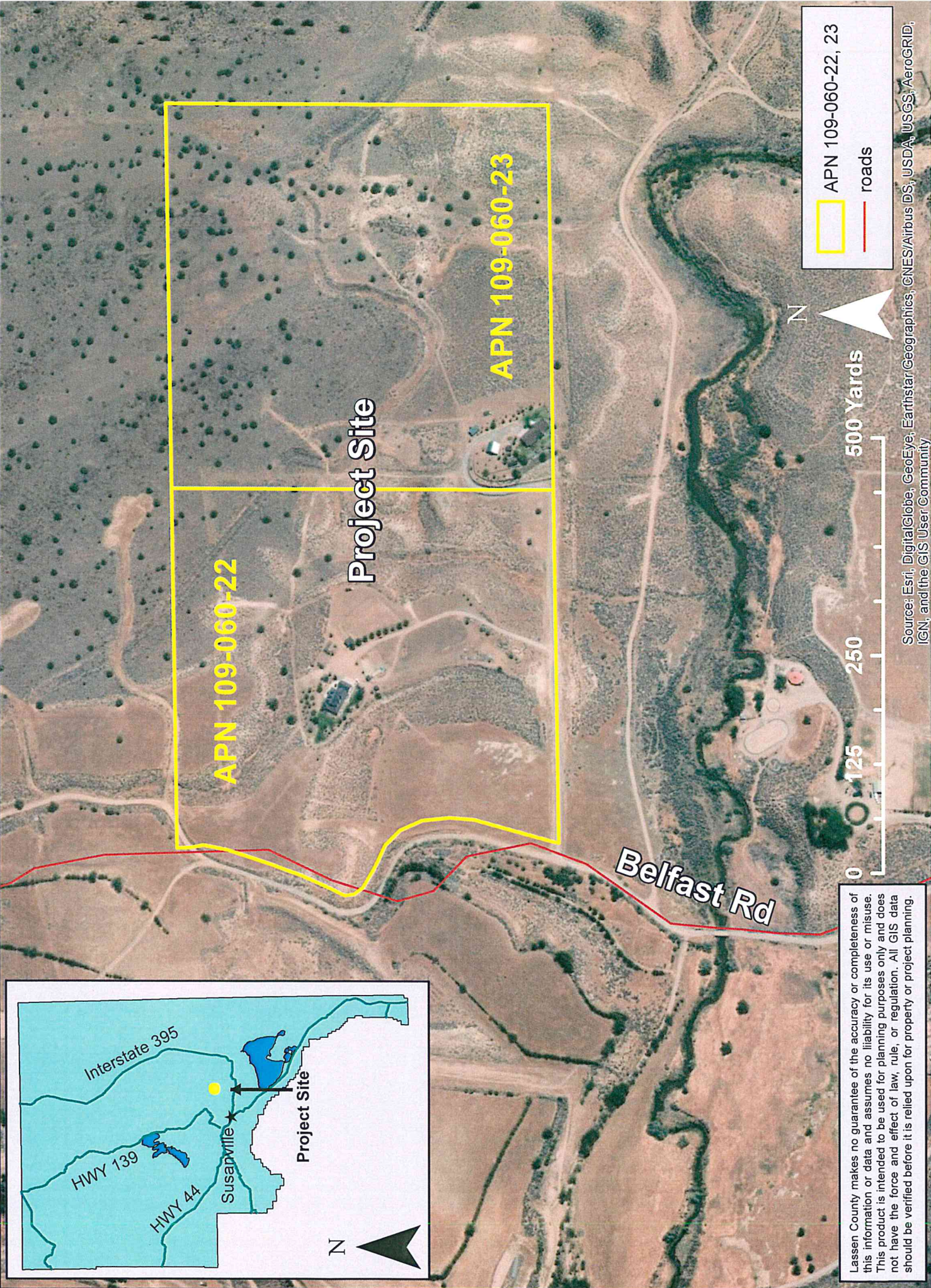
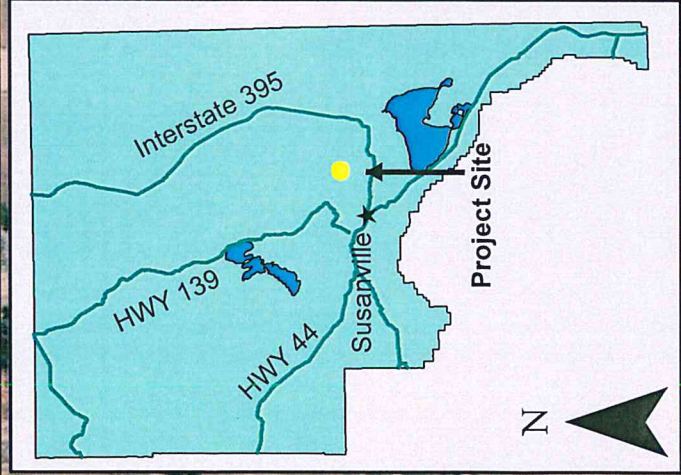
NOTE: Anyone not satisfied with the action of the Planning Commission may, within ten (10) days, appeal in writing to the Board of Supervisors.

PM2005-046\PCPH

Parcel Map #2005-046 Modification, DeForest/Leiding



Parcel Map #2005-046 Modification, DeForest/Leiding



Lassen County makes no guarantee of the accuracy or completeness of this information or data and assumes no liability for its use or misuse. This product is intended to be used for planning purposes only and does not have the force and effect of law, rule, or regulation. All GIS data should be verified before it is relied upon for property or project planning.

Source: Esri, DigitalGlobe, GeoEye, Earthstar Geographics, CNES/Airbus DS, USDA, USGS, AeroGRID, IGN, and the GIS User Community

PROJECT:

Leiding / De Forest Parkel mgs modifications

APPLICANT/AGENT/PO 300'

LASSEN COUNTY

Co. Ag Commissioner
Co. Assessor's Office
Co. Building Official
County Administrative Officer
Co. Coop. Extension/Farm Advisor
County Counsel
County Fire Warden/CAL FIRE
Co. Environmental Health Dept.
Lassen County Reg. Solid Waste
Mgmt. Authority (Mail)
Lassen County Farm Bureau
Lassen Co. Fish & Game Commission:
(put in box downstairs)
Co. Office of Emergency Services
(OES) Co. In care of CALFIRE
Co. Public Works;
Co. Public Works/Road Div.;
Co. Public Works/Transportation
Sheriff
LAFCO (Ag. Preserve BOS 2 weeks
before mtg.

STATE

CA Energy Commission
CA EPA:
-Air Resources Board
-Dept. of Toxic Substances Control
-State Water Resources Control Bd
*Central Valley RWQCB
*Lahontan RWQCB email only
(lahontan@waterboards.ca.gov)
CA Natural Resources Agency:
-Dept. of Conservation
*Div. of Mine Reclamation
*Div. of Oil, Gas & Geotherm. Res.
*CA Geological Survey
-Dept. of Parks and Recreation
-Dept. of Water Resources (DWR)
-Dept. of Fish & Wildlife:
(Redding/Wendel)
-CAL FIRE
CA Public Utilities Commission
Caltrans, District 2
Caltrans, Div. Of Aeronautics
Dept. of Housing & Comm. Dev.
State Clearinghouse (15 copies and
Application)(for Environmental
Initial Study Documents Only)

FEDERAL

Bureau of Land Mgmt.-Alturas
Bureau of Land Mgmt.-Carson City
Bureau of Land Mgmt.-Susanville
Lassen National Forest
NRCS (USDA)
Plumas National Forest
U.S. Army Corp of Engineers
U.S. Fish & Wildlife
U.S. Postal Service

P.O./HOMEOWNER'S ASSN.

Clear Creek P.O.'s Association
Hidden Hills HOA
Susan Hills HOA
Oakwoods Estates HOA

NATIVE AMERICAN GROUPS

Pit River Tribe of California
Greenville Rancheria of Maidu
Indians
Susanville Indian Rancheria
Honey Lake Maidu
Washoe Tribe of Nevada and
California
Native American Heritage
Commission
AB 52 File Letter

FIRE PROTECTION DISTRICTS

Adin Fire Protection District
Big Valley Fire Protection District
Doyle Fire Protection District
Hallelujah Junction (c/o Sierra Valley
Fire District)
Janesville Fire Protection District
Lake Forest Fire Protection District
Madeline Fire Protection District
McArthur Fire Protection District
Milford Fire District
Modoc National Forest
Spalding Fire Department
Standish-Litchfield Fire Protection
District
State Fire Marshal
Susan River Fire Protection District
Susanville City Fire Department

SUSANVILLE CITY

Community Development
Engineer
Parks & Recreation
Road/Public Works
Susanville Water Dept.
Co. Air Pollution Control Officer

SUPERVISORS

Clerk
Supervisor Gallagher (1)
Supervisor Teeter (2)
Supervisor Hemphill (3)
Supervisor Albaugh (4)
Supervisor Hammond (5)

PRESS

County Times
KSUE/Radio
Mountain Echo
Westwood Pine Press

SCHOOL DISTRICTS

Big Valley Unified School District
Fall River Unified School District
Fletcher Walker Elementary School
Fort Sage Unified School District
Janesville Elementary School
Johnstonville Union School
Lassen Community College District
Lassen Union High School District
Long Valley School District
Modoc Joint Unified School District
Ravendale School
Richmond Elementary School
Shaffer Elementary School
Surprise Valley Unified School
Susanville Elem. School District
Westwood School District

COM. SERVICES DISTRICTS

Clear Creek
Lassen County Waterworks
Leavitt Lake
Little Valley
Spalding Community Services District
Stones-Bengard
Westwood

UTILITIES

Frontier Communications
Herlong PUD
Lassen Municipal Utility District
PG & E
Plumas-Sierra REC
Surprise Valley Electrification
Corporation
Susanville Sanitary District

ORGANIZATIONS

Eagle Lake Interagency Board
Honey Lake Valley RCD
Lassen County Cattlemen's Assoc.
Lassen Historical Society
Lassen Land & Trails Trust
Pit River Rod & Gun Club
Organized Sportsmen of Lassen Co.
Fire Safe Council

RAILROADS

Burlington Northern/Santa Fe
Quincy Railroad
Union Pacific Railroad

OTHER:

For Geothermal Projects over 5 MW,
send notices to Adams Broadwell
(Attorneys) at
ssannadan@adamsbroadwell.com see
File 830.10 for specifics.

*• Property owners within 300'
• Both owners*